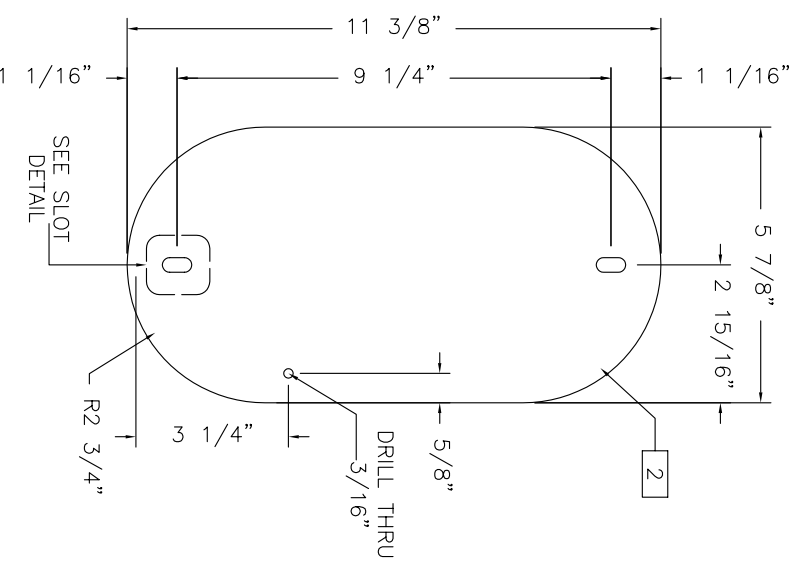


BILL OF MATERIAL

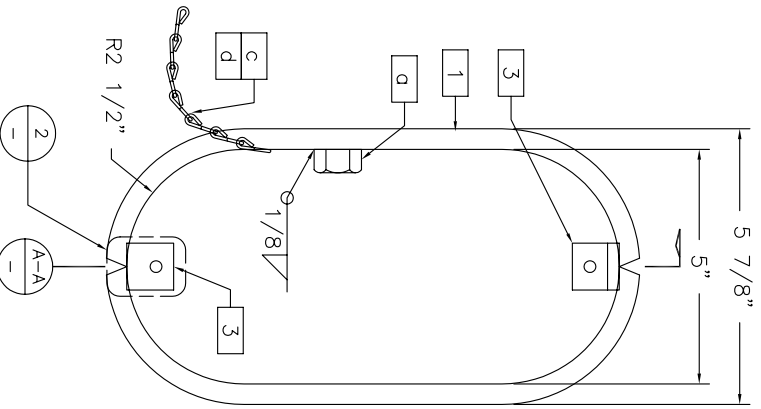
Item#	Qty.	Part No.	Description	Wt./ea.	Total Wt.
1	2	00-HHF	HAND HOLE FRAME PL 7/16" X 2" X 1'-2 1/8" (A572/65)	3	6
2	1	00-HHC	HAND HOLE COVER PL 11ga. X 5 7/8" X 11 3/8" (A36)	2	2
3	2	00-HHL	HAND HOLE LUG L 1" X 1" X 1/4" (A36)	-	-
				BLACK WT.	8
				GALV. WT.	9

HARDWARE BILL OF MATERIAL

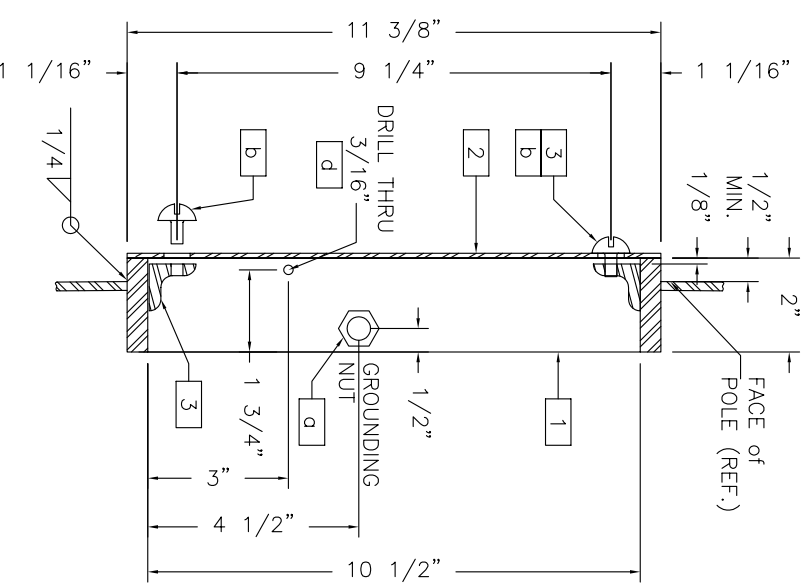
Item#	Qty.	Part No.	Description	Wt./ea.	Total Wt.
a	1	00-GNI	GROUNDING NUT 1/2" SS NUT (A304)	-	-
b	2	00-BI	1/4" X 1/2" LG. HEX BOLT FULL THREAD (A307) (GALV)	-	-
c	1	00-CI	CHAIN- #12 SINGLE JACK CHAIN 18" LG. (S.S.)	-	-
d	2	00-RI	RIEVETS: 0.19" x 0.50" LG. PDP RIVET	-	-



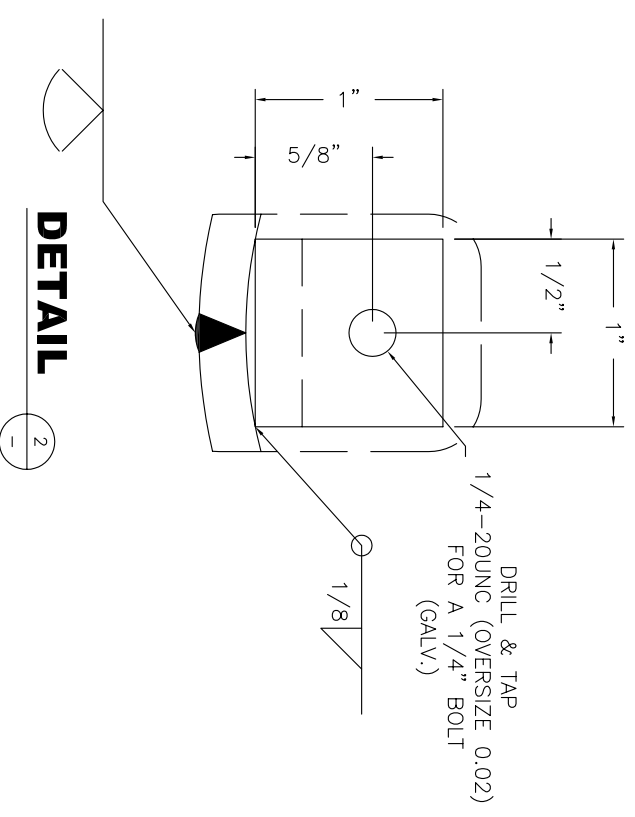
COVER PLATE



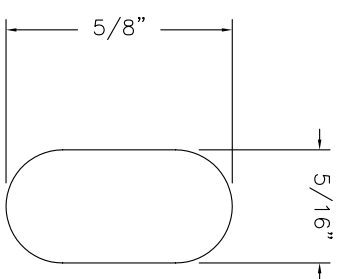
FRONT VIEW



SECTION

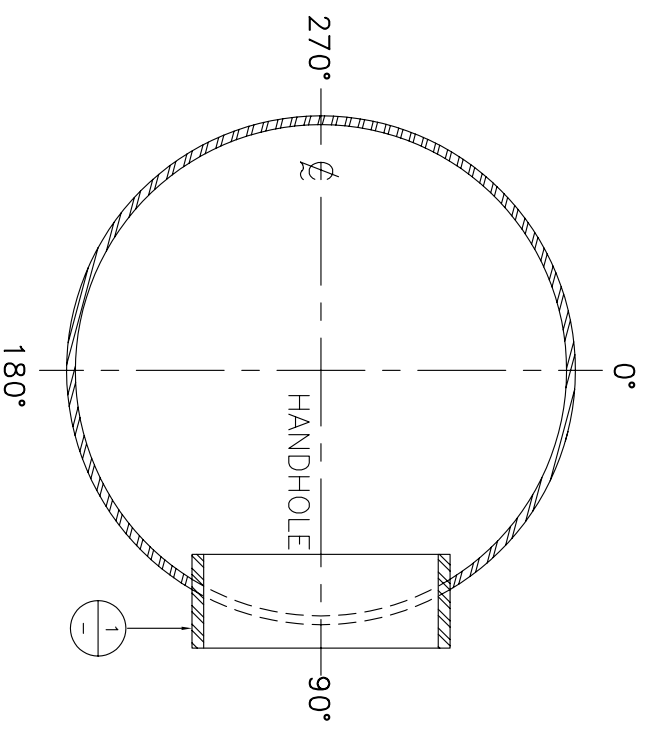


DETAIL



SLOT DETAIL

HAND HOLE DETAIL



ORIENTATION

REV.	DATE:	REV. BY	CHK. BY	DESCRIPTION
-	-	-	-	-

DWN	DATE	DATE
	12/28/06	
CHK	DATE	
	01/04/07	
APP	DATE	

5" X 10 1/2" HAND HOLE		
-------------------------------	--	--

CUST. P. O. NUMBER	ORDER NO.	DRAWING NO.	SH/DF	SCALE	REV.
---			01/01	NTS	0