

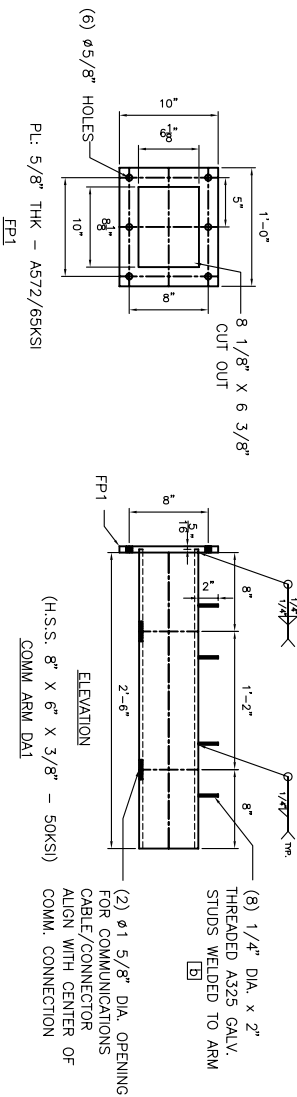
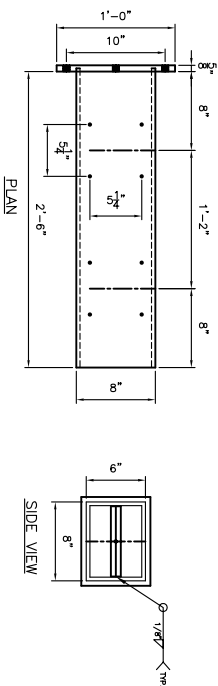
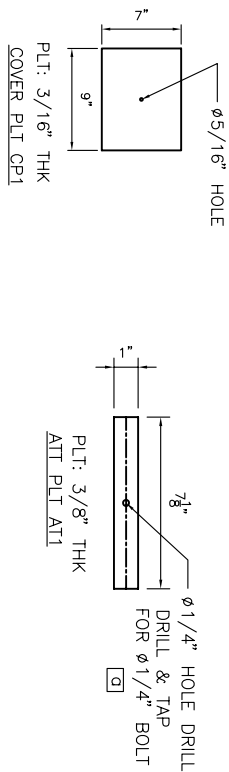
BILL OF MATERIAL

Item#	Qty.	Part No.	Description	Wt./ea.	Total Wt.
1	1	DA1	ARM - H.S.S. 3/8" x 8" x 6" x 2'-6" (50KSI)	82	82
2	1	FP1	ARM FACE PLT PL 5/8" x 12" x 10" (A572/65)	16	16
3	1	CP1	COVER PL 3/16" x 9" x 7" (A36)	5	5
4	1	AT1	ATT PLT PL 3/8" x 1" x 7 1/8" (A572/65)	1	1
				BLACK WT.	104
				GALV. WT.	110

HARDWARE BILL OF MATERIAL

Item#	Qty.	Part No.	Description	Wt./ea.	Total Wt.
1	1	a	1/4" x 1" LG. FULL THRD BOLT (GALV.) (A307)	1	1
2	8	b	1/4" x 2" LG. FULL THRD STUDS (GALV.) (A325 TYPE 1)	1	8

QTY. SHOWN IS FOR ONE (1) STR. ASSEMBLY



FOR DWG #
S-3, S-4
S-5, S-6

TOTAL ARM QTY = 32

FOR FAB.

MASSACHUSETTS PORT AUTHORITY
 AIRFIELD COMM. INFRA. INST.

REV.	DATE	REV. BY	CHK. BY	DESCRIPTION

OWN	DATE	MASSACHUSETTS PORT AUTHORITY AIRFIELD COMM. INFRA. INST.
CHK	DATE	
APP	DATE	

CUST. P.O. NUMBER	ORDER No.	DRAWING No.	SH/OF	SCALE	REV.
		DA1	01/01	NTS	0