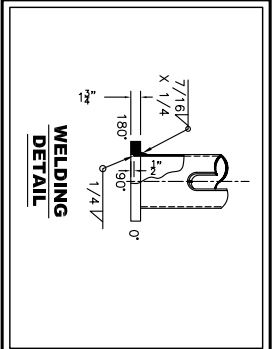


TOP PLATE DETAIL

STAMPED DEEP MIN. 1/16" ON TO TOP OF BASE PLATE WITH 1/2" MIN. LETTERING.

05-174A
ARM = 44 FT
80MPH

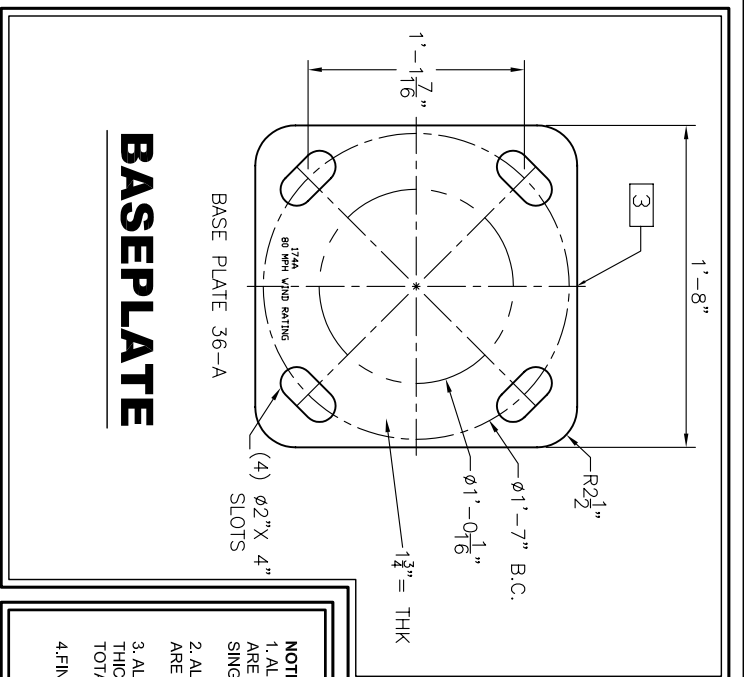
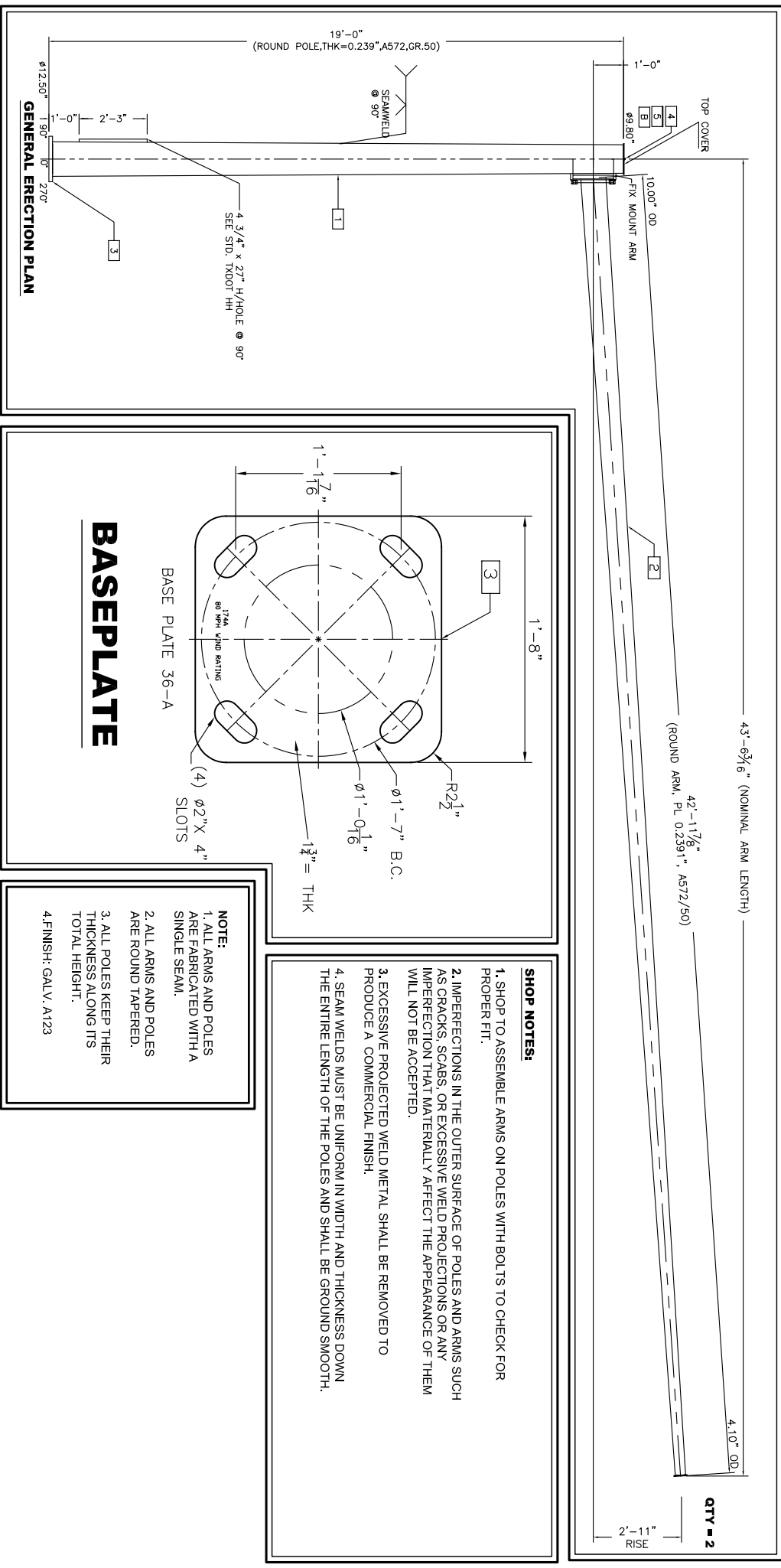


BILL OF MATERIAL

Item#	Qty	Part No.	Description	Wt./ea.	Total Wt.
1	1	174A-5-PDL	19' X 12.5"Ø X 9.87" THK A572 GR 50KSI	530	530
2	1	-	ARM ASSEMBLY SEE SHEET 0174-ARM-44FT	802	802
3	1	174A-5-BP	20" SQ X 1.75" A-572 GRSO. BASE PLATE	143	143
4	1	174A-5-CAP	10.80" Ø X 1/4" A-36 FOLE CAP	8	8
5	1	-	1/2"Ø X 7 7/8" LG ROUND BAR A-36 CAP SUPPORT	3	3
#	1	-	4 3/4" X 27" HANDLE SEE STANDARD	50	50
				BLACK V.T.	1536
				GALV. V.T.	1628

HARDWARE BILL OF MATERIAL

Item#	Qty	Part No.	Description	Wt./ea.	Total Wt.
A	4	ARM CONN	1 1/4" X 3" LG A325-1/FV/L/V	-	-
B	1	CAP BOLT	1/4"Ø J-Hook w/HN/F/V	-	-



NOTE:

1. ALL ARMS AND POLES ARE FABRICATED WITH A SINGLE SEAM.
2. ALL ARMS AND POLES ARE ROUND TAPERED.
3. ALL POLES KEEP THEIR THICKNESS ALONG ITS TOTAL HEIGHT.
4. FINISH: GALV. A123

SHOP NOTES:

1. SHOP TO ASSEMBLE ARMS ON POLES WITH BOLTS TO CHECK FOR PROPER FIT.
2. IMPERFECTIONS IN THE OUTER SURFACE OF POLES AND ARMS SUCH AS CRACKS, SCABS, OR EXCESSIVE WELD PROJECTIONS OR ANY IMPERFECTION THAT MATERIALLY AFFECT THE APPEARANCE OF THEM WILL NOT BE ACCEPTED.
3. EXCESSIVE PROJECTED WELD METAL SHALL BE REMOVED TO PRODUCE A COMMERCIAL FINISH.
4. SEAM WELDS MUST BE UNIFORM IN WIDTH AND THICKNESS DOWN THE ENTIRE LENGTH OF THE POLES AND SHALL BE GROUND SMOOTH.

QTY = 2

2'-11" RISE