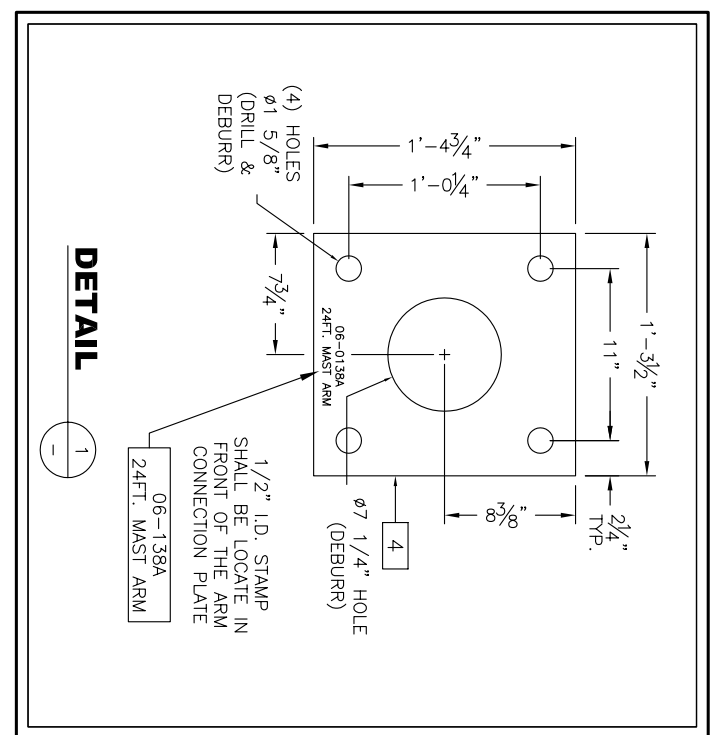
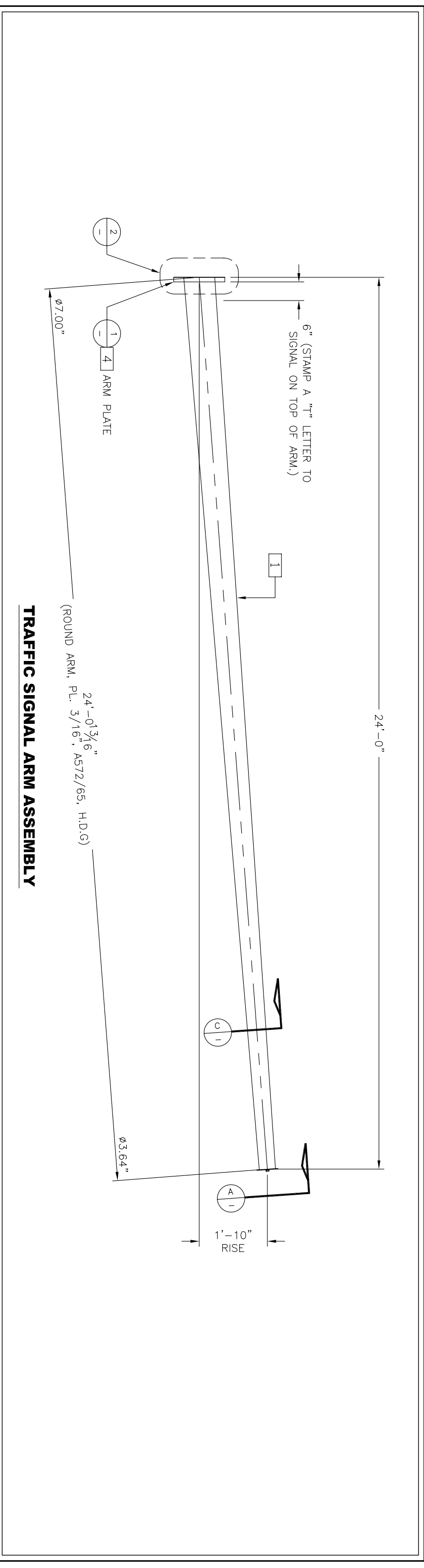
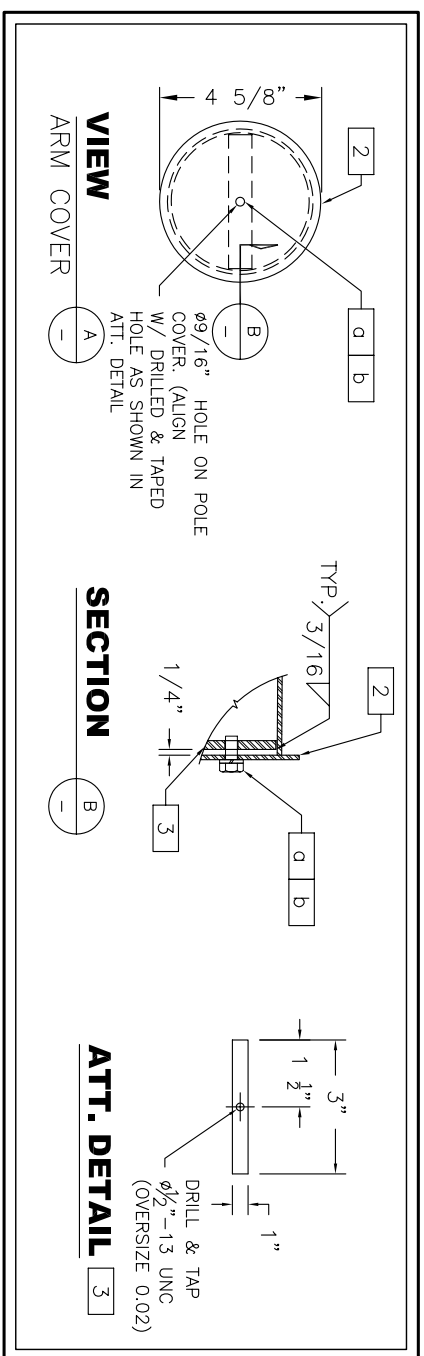
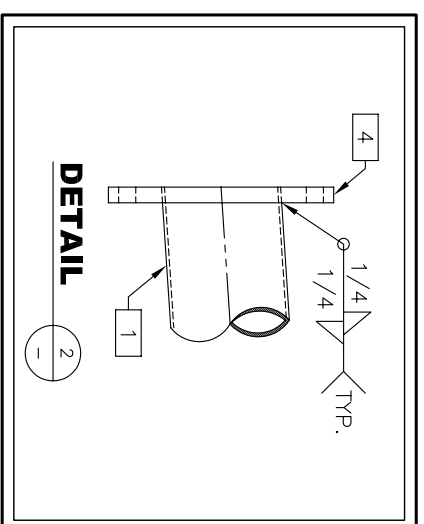


**BILL OF MATERIAL**

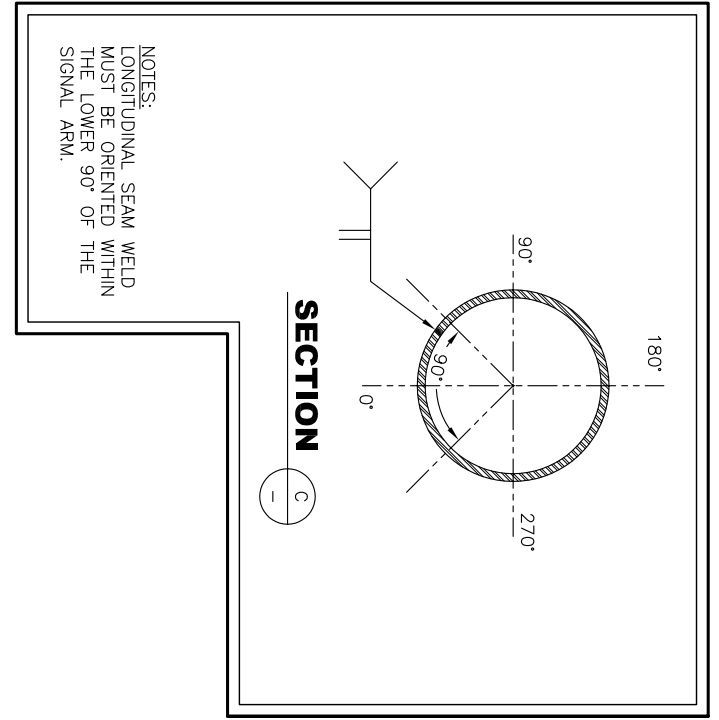
Item#	Qty.	Part No.	Description	Wt./ea.	Total Wt.
1	1	138-1-AR	ARM: PL 3/16" x 3.64" OD x 7.00" DD x 24'-0 13/16" (A572/65)	247	247
2	1	138-1-AC	ARM COVER: PL 3/16" x 4 5/8" DIA. (A572/65)	1	1
3	1	138-1-AAP	ARM ATTACHMENT PLATE: PL. 3/8" x 1" x 3.00" LG. (A572/65)	-	-
4	1	138-1-ACP	ARM CONNECTOR PLATE: 1 1/2" x 16 3/4" x 15 1/2" (A572/50)	90	90
				BLACK W/T.	338
				GALV. W/T.	358

**HARDWARE BILL OF MATERIAL**

Item#	Qty.	Part No.	Description	Wt./ea.	Total Wt.
a	1	00-B1	1/2" X 1" LG H BOLT, FULL THREADED (GALV) (A307)	-	-
b	1	00-SLW1	1/2" SPRING LOCK WASHER (GALV) (B18.211)	-	-



- NOTES:**
1. ALL ARM SHAFT MAT'L SHALL BE 65KSI.
  2. ALL WELDING SHALL BE PER AWS D1.1
  3. ALL ARMS SHALL BE GALVANIZED PER ASTM A-123.
  4. SEAM WELD SHALL BE GROUND FLUSH.



REV.	DATE:	REV. BY	CHK. BY	DESCRIPTION
-	-	-	-	-

DWN	DATE	
CHK	DATE	24FT_MAST_ARM
APP	DATE	

**\*\* ARM ASSEMBLY DETAILS**

CUST. P.O. NUMBER	ORDER No.	DRAWING No.	SH/DF	SCALE	REV.
---			01/01	NTS	0